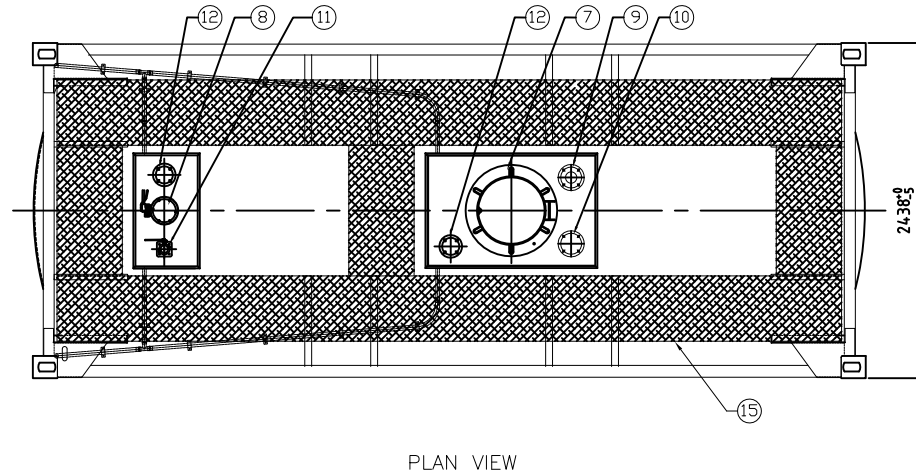
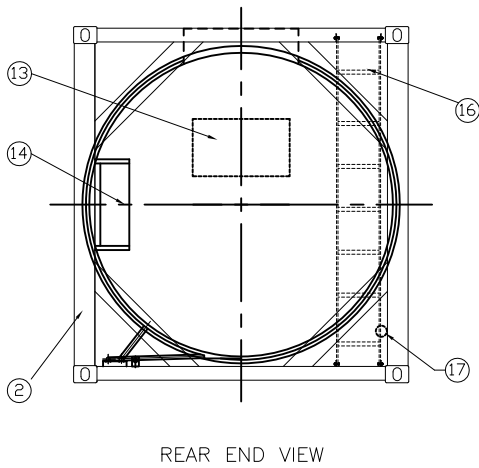
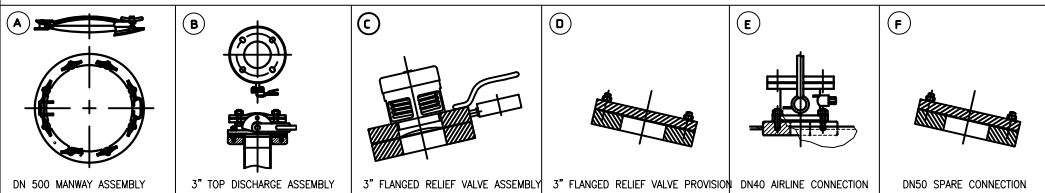


INSULATION AND FULL HEATING COILS NOT SHOWN FOR CLARITY



DESIGN CRITERIA	
DESIGN CODE: TANK	ASME SECT VIII DIV. 1 IMDG T14, 49CFR T14, ADR/RID
FRAME	IMDC, 49CFR, ADR/RID, AAR CSC, UIC, TIR, ISO, TC.
AMBIENT TEMPERATURE RANGE	- 20 °C TO + 65 °C
VESSEL DESIGN TEMPERATURE	- 40 °C TO + 130 °C
WORKING PRESSURE	4 BAR
TEST PRESSURE	6 BAR
DESIGN EXTERNAL PRESSURE	0.41 BAR
MATERIALS:	FRAME GB/T 1591 Q345D
SHELL AND ENDS	ASTM A240 316/316L SANS 50028-7 Wnr 1.4402
SHELL MINIMUM THICKNESS	4.4 MM
HEAD MINIMUM THICKNESS	4.7 mm AFTER FORMING
CORROSION ALLOWANCE	0.2 mm MAXIMUM
RADIOGRAPHY:	SHELL SPOT ENDS 100%
NOMINAL CAPACITY	21000 LITRES
MAX GROSS WEIGHT	36000 kg
TARE WEIGHT	3600 kg
STACKING CAPABILITY	216,000 KG
MAX PAYLOAD	32600 kg
PRODUCT LIST	AS LISTED UNDER UN PORTABLE TANK T14
CONTAINER SIZE	6058 mm x 2438 mm x 2591 mm
FRAME FINISH	SHOT BLAST SA2.5; 3 COAT PAINT SYSTEM
INSPECTION AUTHORITY	BY or LR

NOZZLES LIST	
DETAIL	DESCRIPTION
A	MANWAY ASSEMBLY 500mm, 8 POINT MANWAY ASSEMBLY WITH BRASS HAND-NUTS SEAL: PTFE ENCAPSULATED EPDM INNER
B	TOP DISCHARGE ASSEMBLY 3" SANDWICH BUTTERFLY VALVE FITTED WITH A SIPHON TUBE ADAPTOR COMPLETE WITH A BOLTED BLANK FLANGE GASKET: PTFE
C	RELIEF VALVE ASSEMBLY 3" FLANGED PRESSURE RELIEF VALVE WITH ADAPTOR FLANGE FITTED WITH MANOMETER AND BURSTING DISC PRV SET PRESSURE: 4.4 BAR; DISC SET PRESSURE: 4.84 BAR GASKET: PTFE
D	RELIEF VALVE PROVISION 3" WELD-IN PAD WITH BOLTED BLANK FLANGE GASKET: PTFE/CNAF
E	AIRLINE CONNECTION 1.5" FLANGED BALL VALVE C/W BOLTED BLANK FLANGE GASKET: PTFE
E	SPARE CONNECTION DN50 WELD-IN TANK PAD WITH BOLTED BLANK FLANGE GASKET: PTFE



19	STEAM COIL ASSEMBLY		
18	INSULATION DETAIL		
17	DOCUMENT HOLDER		
16	LADDER DETAIL		
15	WALKWAYS ASSEMBLY		
14	DATA PLATE DETAILS		
13	DECAL AND MARKING DETAILS		
12	SPARE CONNECTION	F	
11	AIRLINE CONNECTION	E	
10	RELIEF VALVE PROVISION	D	
9	RELIEF VALVE ASSEMBLY	C	
8	TOP DISCHARGE PROVISION	B	
7	MANWAY ASSEMBLY	A	
6	COLLAR DETAILS		
5	SPILL BOX ASSEMBLY		
4	STIFFENING RING DETAILS		
3	MAIN FRAME		
2	END FRAME		
1	SHELL ASSEMBLY		
ITEM	DESCRIPTION	ITEM REF.	DWG No.

DO NOT SCALE. IF IN DOUBT, ASK		CUSTOMER		DRN.	zyw	DATE	2014.7.4	TITLE
		JOB No.		CHKD.	ghf	DATE	2014.7.4	
REVISION		DATE	MODIFICATION	MOD. BY	CAD FILENAME	21KL GA	DRAWING No.	21000/NT001/04/1
								21000 LITRE T14 GENERAL ASSEMBLY